


PCM DRIVER™ CG-40

THE SURFACE DRIVE SOLUTION FOR YOUR
PCP OPERATIONS

keep it moving 



CG-40 (40HP)

Designed with the latest engineering technology to ensure full compliance with Oil and Gas standards, PCM Driver™ driveheads are safe and reliable surface drive solutions specifically conceived for all your PCP operations.

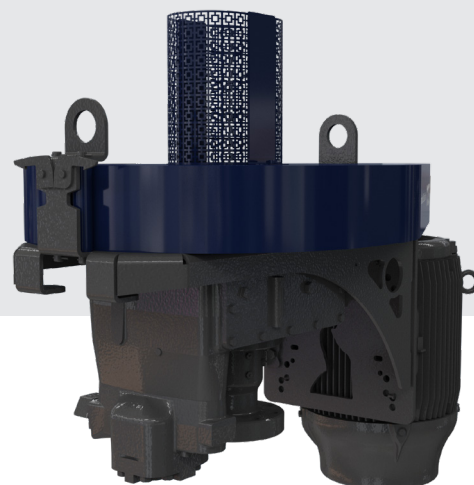
The conception and the qualification of the PCM Driver™ driveheads comply with ISO 15136-2-Surface Drive System requirements.

The **PCM Driver™ CG-40** cost effective solution performs with all your power requirements up to **40 HP**.

The robust 5:1 gearbox allows for the use smaller pulleys for ease of maintenance and to improve safety. It also permits lower speed operation of the downhole pump without the need to operate the electric motor at a very low frequency.

» BENEFITS

- Fully internal brake system
- Patented integral rotating seal system
- Rotating parts fully covered
- Low maintenance requirements
- Associated service and technical support



PCM

Artificial Lift Solutions

» **INNOVATION FOR SAFETY**

Belt guard:

- compact and durable, all rotating parts fully protected

Fully internal brake system:

- Efficient backspin control
- Adjustable brake sensitivity

Anti-ejection system available for polished rod clamp.

CE certification, including ATEX, is pending.

» **INNOVATION FOR LOW MAINTENANCE REQUIREMENT**

Only maintenance required is oil change every 6-14 months and regular visual inspection

Industry proven and patented integral environmental rotating sealing system.

- Testable for leaks past primary seals before all seals leak
- Stuffing box available as an option.

» **FIRST CLASS SERVICE**

- PCM Service team available worldwide to support customer
- Dedicated PCP team will support customer regarding any queries or issues faced with our PCM Driver™.

» **SPECIFICATIONS**

Drive mode	Belt and pulleys through Internal Gear 5:1 Ratio
Max driven sheave	14" (356 mm)
Ambient conditions	-40°F to 105°F (-40°C to +40°C)
Braking system	Internal gear pump with adjustable control valve
Max speed	500 RPM
Max Torque	1 200 ft-lb (or 1627 N.m)
Sealing system	Patented integral rotating seal
Max Temperature	390°F (200°C)
Max Pressure	Dynamic: 1 000 PSI (70 Bar) Static: 1 000 PSI (207 Bar)
Shaft type	Hollow shaft
PR diameter	1"1/4 (31.75mm) or 1"1/2 (38.10mm)
API Wellhead	Flanged 3"1/8 3M R31 or 4"1/16 3M R37
Bearing dynamic axial load rating (Ca, ISO 281)	111 300 lb (495 kN)
Bearing dynamic axial load rating (Ca90)	28 800 lb (128 kN)
Bearing load for L10 life of 25 000 hours at 500 RPM	6,9 T
Prime mover	Electric motor
Max. Motor HP	40 HP (30kW)
Max. noise level	< 70 dB
Total Weight	1050 lb (476 kg)
Dimensions	56.5" x 32.9" x 39.6" (1.44 x 0.84 x 1.01 m)

To ensure compliance with local regulations, CE and ATEX certification is pending for the PCM Driver™ CG-40. This will be available as an option.